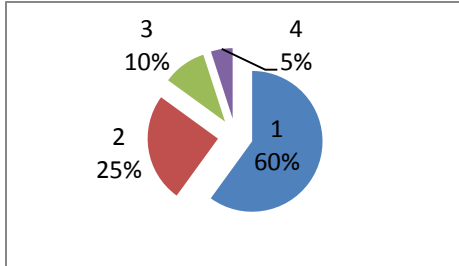


National Assessment and Accreditation Council (NAAC)
Student Satisfaction Survey
Key Indicator 2.7.1
Under Criterion II of Teaching – Learning and Evaluation

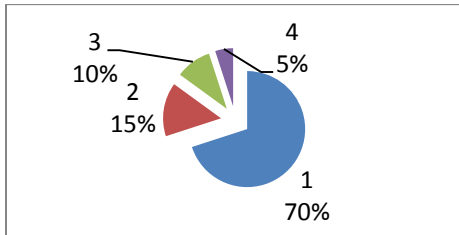
Q1 Quality of communication by the teacher

1. Excellent
2. Good
3. Average
4. Not Effective



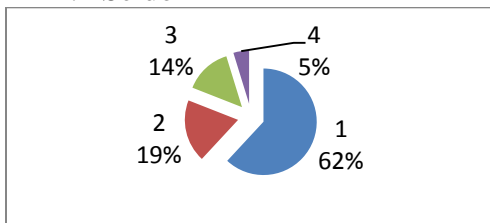
Q2 Coverage of syllabus in the classes

1. Near 100 %
2. Near 80 %
3. Near 70 %
4. Near 60 %



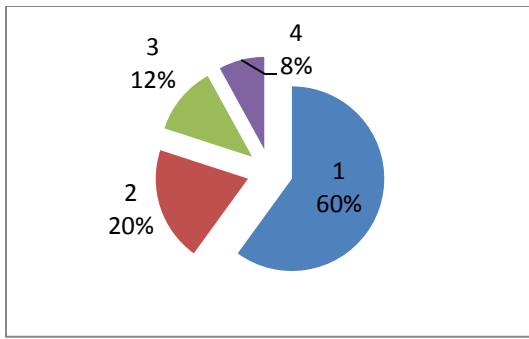
Q3 Delivery of course contents using practical illustration and real life examples

1. Always
2. Quite Often
3. Sometimes
4. Seldom



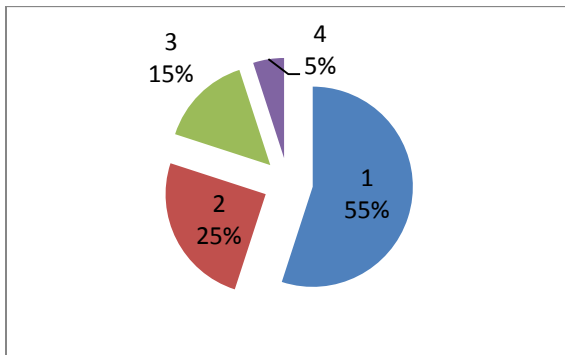
Q4 Are the teachers well prepared to answer students' queries in the classroom

1. Always
2. Quite Often
3. Sometimes
4. Seldom



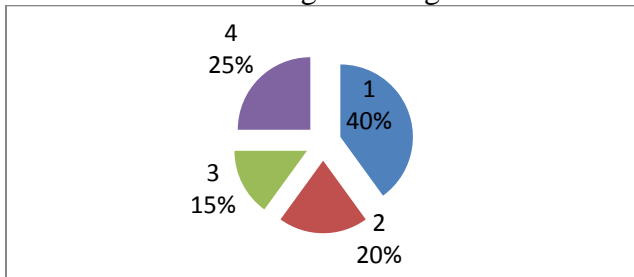
Q5 Are you satisfied with the internal evaluation process and is it?

1. Fair and Objective
2. Usually So
3. Sometime unfair and subjective
4. Biased and partial



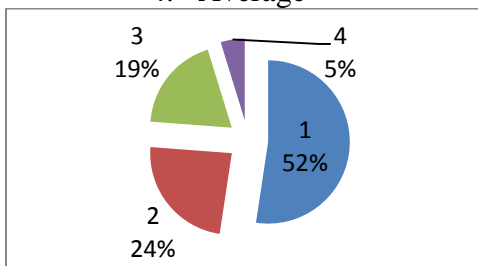
Q6 Do you feel the need for administrative reforms regarding the following

1. Internal Evaluation system
2. Students Feedback system
3. Mentoring Systems
4. Teaching Learning Process



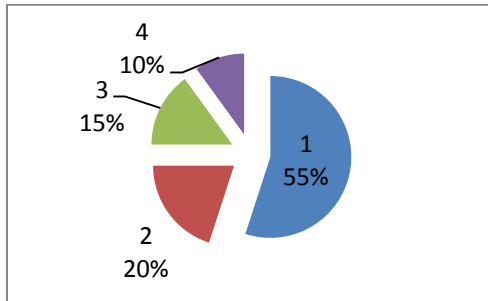
Q7 How do you rate the delivery of (Overall) academic quality of the college

1. Excellent
2. Good
3. Moderate
4. Average



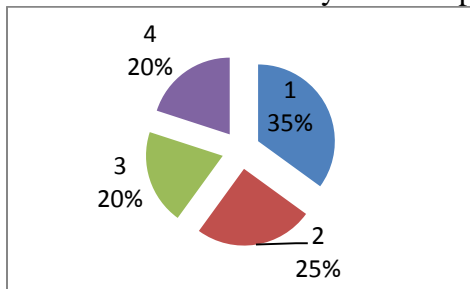
Q8 How often does the faculty use of ICT and latest teaching technology in the teaching process

1. Always
2. Quite often
3. Sometimes
4. Seldom



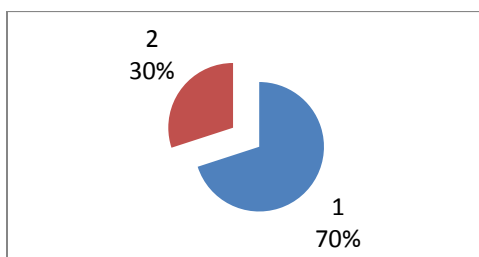
Q9 Does the College encourage students' participation by providing opportunities for

1. Social and Emotional Growth (Yes/No)
2. Development of Soft Skills (Yes /No)
3. Physical culture and Growth (Yes/No)
4. Gender sensitivity and Interpersonal harmony(Yes/No)



Q10 Does the institution offer adequate opportunities for

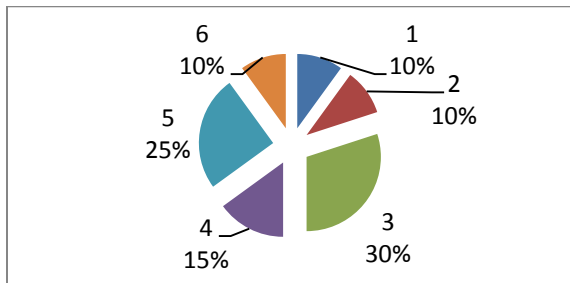
1. Industrial Interaction (Yes/No)
2. Exposure to institution of Higher Learning (Yes/No)



Q11 How do you rank the following infrastructural parameters on the campus

- A) Campus Space
 - a. Excellent
 - b. Very Good
 - c. Good
 - d. Average
- B) Canteen and Students common rooms
 - a. Excellent
 - b. Very Good

- c. Good
- d. Average
- C) Labs and equipments
 - a. Excellent
 - b. Very Good
 - c. Good
 - d. Average
- D) Parking space
 - a. Excellent
 - b. Very Good
 - c. Good
 - d. Average
- E) Classroom
 - a. Excellent
 - b. Very Good
 - c. Good
 - d. Average
- F) Sports Complex
 - a. Excellent
 - b. Very Good
 - c. Good
 - d. Average



Q12 Does the College encourage students' participation in Sports and CCA activities
Yes/No

